

#Nextgeneration

HOMEGROWN BESTSELLERS

CATALOGUE



.Business Incubation .Market Access .Training Technology
and Innovation Support . Business Plan Development .
Business Advisory Monitoring



LOCAL ENTERPRISE AUTHORITY

Homegrown Brands

#powered by LEA




OUR MANDATE

IN ACCORDANCE WITH THE SMALL BUSINESS ACT (SBA), LOCAL ENTERPRISE AUTHORITY'S MANDATE IS TO PROMOTE ENTREPRENEURSHIP AND DEVELOP THE SMALL, MEDIUM AND MICRO ENTERPRISES (SMMEs) THROUGH:

- Providing assistance to SMMEs in the preparation of business plans, feasibility studies and market surveys;
- Improving the business skills and competences of SMME entrepreneurs through the provision of training and advisory services in entrepreneurship development, technology, marketing and through appropriate mentoring services;
- Creating growth opportunities for SMMEs through securing greater access to Government procurement contract for goods and services, in consultation with Government Ministries, local authorities and Parastatal organizations;
- Identifying SMME firms with export potential and assist them to enhance their productivity and competitiveness for export markets;
- Promoting business linkages between SMMEs and big industries, including the purchasing of locally produced goods and services by larger firms;
- Facilitating access to information on support services and sourcing of raw materials by SMMEs through publicity, outreach and information technology;
- Working with relevant institutions to develop and implement appropriate product and service standards, and to enhance both quality awareness and improvement of SMME products and services through training and advisory services that lead to certification of these products and services;
- Monitoring and evaluating the impact of functions set out under this and above paragraphs and provide mentoring services in order to achieve long term sustainability of SMMEs;
- Working with SMME entrepreneurs and technology institutions to facilitate innovation, acquisition, adaptation and diffusion of appropriate technology for effective use by SMMEs;
- Facilitating access to funding for enterprise development as well as expanding existing enterprises through regular consultation with financial institutions;
- Making recommendations to the Minister on ways to simplify regulations which impose a burden on SMMEs in terms of compliance, time, effort and money;
- Ensuring that SMMEs trainers, training institutions, training programmes and materials are accredited in accordance with the Botswana Qualifications Authority (BQA) standards or the standards of such other authority as the Minister may approve; and
- Facilitating and coordinating the provision of infrastructure and facilities such as factory shells and working space, including serviced land and utility services for SMMEs, in conjunction with Local Authorities, Parastatal organizations, the Private sector and the Government.

THE AUTHORITY'S KEY DELIVERABLES AS PER THE SBA ARE SUMMARIZED AS FOLLOWS:

- Promotion of citizen entrepreneurship;
- Further diversification of the economy;
- Promotion of exports;
- Development of a competitive SMME community;
- Creation of sustainable employment opportunities;
- Promotion of development of vertical integration and the horizontal linkages; between SMMEs and primary industries in agriculture, services, manufacturing and tourism;
- Improved efficiency in the delivery of services to business;
- Promotion of business linkages between small and large enterprises.



LEA has an extensive countrywide footprint of 13 branch offices country-wide, located in Gaborone, Francistown, Ghanzi, Kanye, Kasane, Masunga, Maun, Pilane, Molepolole, Ramotswa, Selibe-Phikwe, Serowe and Tsabong. In addition, the Authority has two satellite offices in Hukuntsi and Letlhakane, to offer business development and support services to the citizens of Kgalagadi North and Boteti region respectively. Furthermore, LEA operates five Incubation Centres that provide shared facilities, subsidized business operational space, business and technical skills acquisitions and technology support to accelerate growth of the incubated enterprises.

The LEA Incubators:

- Francistown Industrial Business Incubator
- Leather Industries Incubator in Gaborone
- Glen Valley Horticulture Incubator in Gaborone
- Pilane Multi-Purpose Business Incubator
- Kutla Incubation Centre in Gaborone

OUR VISION

To be the centre of excellence for entrepreneurship and sustainable SMME development in Botswana.

OUR MISSION

To promote and facilitate entrepreneurship and SMME development through targeted interventions in pursuit of economic diversification

OUR VALUES

Self-Driven

- We are passionate, accountable, eager to learn, persistent and determined to achieve personal goals so that the entire team achieves its desired results.

Transformational Leadership

- We are inspired and self-led, motivated, innovative and accountable to achieve maximum potential in a favourable work environment.

Partnership

Through our internal teamwork and effective partnerships with stakeholders, our efforts are synergized resulting in the success of our clients.

Entrepreneurial

We build an entrepreneurial culture and unearth business opportunities for the Small Medium



OUR VALUE PROPOSITION

**ENTREPRENEURSHIP
AND SUSTAINABLE
SMME DEVELOPMENT
IN BOTSWANA**

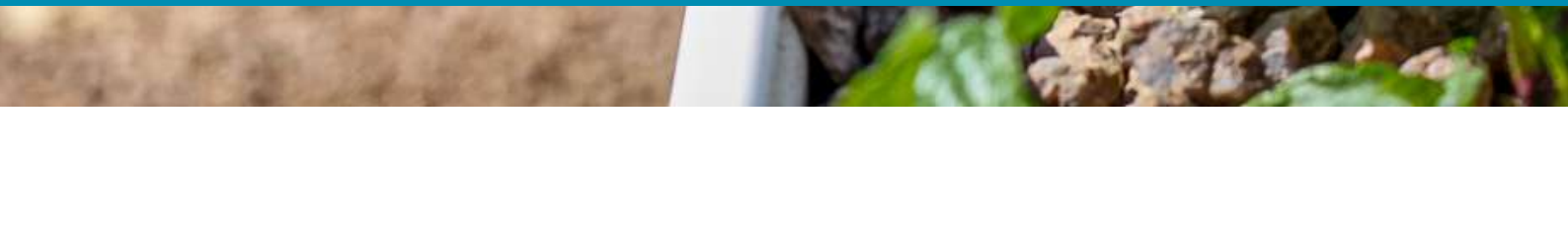


TABLE OF CONTENT

CEO'S Statement	1
Consumer Fair Highlights	2
Hair & Body Care	3-5
Food & Beverages	6-11
Packaging	12
Farming	13-14
Health care & Pharmaceuticals	15-16
Fashion & textiles	17-19
Cleaning & detergent	20-21
Building & hardware	22-24
Lubricants	24
Tourism & Procurement	25



LOCAL ENTERPRISE AUTHORITY





CEO STATEMENT

Dr Racious M. Moatshe
Chief Executive Officer

I am thrilled to present the Local Enterprise Authority's catalogue of over sixty #NextGeneration Homegrown Bestsellers.

This edition captures the essence of our mandate as an SMME development Authority, as well as the achievements and aspirations of our local SMMEs. Amongst those featured are businesses that started their journey with LEA as abstract but promising ideas, some were untested prototypes, some start-ups, while some still had made it to market but lacked capacity and the know-how to steadily penetrate the market and unseat firm favourites.

These LEA-supported brands have benefited from a myriad of targeted interventions including among others; ideation, market validation, early product development, business plan development and facilitation of access to capital, basic and advanced business and sector-specific training and incubation, technology sourcing and adoption, product testing and certification, branding, packaging and labelling, business advisory services, mentorship and coaching, as well as the all-important market access support. An impressive number of these enterprises have received export market facilitation and are making inroads into global markets.

With a special focus on the import bill and responding to emerging opportunities presented by the recently enacted Economic Inclusion Act 2021, the Public Procurement Act 2021, the Middle-Class Strategy, and other local preferential schemes including importation restrictions; the Local Enterprise Authority has intensified its efforts to expand the local basket of quality and fit-for-market products and services, especially in the manufacturing, horticulture and

tech and innovation space. I am happy to report that our efforts as a Centre of Excellence for entrepreneurship and SMME development, have over the years empowered these brands to increase their production capacity, improve product quality, enhance their skills set, and adopt innovative and efficient systems for competitiveness.

More effort is also being put into facilitating high value Buyer-Seller linkages through several but complementary mediums, one of which is the print and digital SMME catalogue for distribution to key stakeholders, especially potential buyers, and Procurement Entities. All these platforms are intended to stimulate and grow import substitution, diversify the economy, contribute to job creation, and increase export revenue; all of which are currently national priorities.

We hope that with this edition, you will be inspired as we are, to championing these stellar brands by making them and other local brands; a permanent feature in your shopping lists or supplier database, turning them into household brands.

Do enjoy this edition and be on the lookout for new features on **#Homegrown Brands!**

Dr Racious M. Moatshe
Chief Executive Officer

2022 CONSUMER FAIR

Highlights



HAIR & BODY CARE



KNOW US



#poweredbyLEA



Shedol
COSMETICS

We are formulators and manufacturers of fragrances and natural cosmetic products, with the mandate to incorporate African sourced oils and butters into our formulations which are fairly and sustainably sourced.

Services Offered

- Direct sales through our cosmetic Kiosks and Retail stores
- Corporate gifting and promotional materials
- Contract manufacturing
- Hotel amenities
- Office /Restaurant lotion and wash dispensers

✉ info@shedolgroup.co.bw
 📱 Shedol-Cosmetics



The solution was birthed from a need to solve a confidence problem all throughout my teen and early adult life, acne was a consistent pain. The pain could be alleviated by temporary dosages of oral acne treatment – but could still relapse. Later that year, I would stand on shopping store aisles in pursuit of a product that was manufactured with the understanding of my African Skin and African Climate.

The gap in the market made me realize that an African Story

of skincare made in Botswana had to be told. Imagine the possibility of a potent skincare range that is specifically empowered by plants and backed by science- while empowering communities.

In Botswana, we are available in the following chain stores nationwide:

- Choppies Hyperstores
- Health Alternatives
- Pulse Pharmacy
- Health Hut and
- Chidzanani Pharmacy

☎ 77878171 ✉ organicnaturalskin@gmail.com | P O Box 2324 Maun



ludo
CHOOSE LOVE

Ludo Beauty is a local hair cosmetic brand that manufactures organic hair care products. The brand was established in 2017. Ludo Beauty takes pride in offering plant based, non-toxic hair care products using organic and indigenous ingredients such as Aloe Vera, Marula Oil and Shea Butter.

They offer a variety of hair care products aimed at healthy natural hair. These include shampoo, deep conditioner and scalp relief oil. These products are uniquely formulated to suit the Southern African weather conditions and also customized to benefit African Hair Care needs.

☎ 75 215 491 ✉ info@ludobeauty.com Instagram: ludobeauty



NORA
SIMPLY ELEGANT

Nora Cosmetics Pty Ltd is a Botswana based cosmetics brand owned and founded by a young Motswana lady Norah Mc Aslin. The brand owner and current ambassador started the company from a pure passion for beauty, makeup and lifestyle products. She has extensive knowledge of the beauty industry and is a professional makeup artist and former model.

OUR PRODUCTS RANGE:

- Creme to powder foundation
- Black Eyebrow Gel
- Mascara
- Highlighter Palette
- Lipsticks
- Facial Wipes
- Brushes
- Black Eyebrow Pencil
- Brown Eyebrow Pencil

☎ 71920596 / 71307326 ✉ enquiries@noaracosmetic.com
 📱 Nora Cosmetics



Alifresh Alpha Pty (Itd) is a 100% citizen owned registered Company trading under the company name Alifresh Cosmetics. The company has been trading since 2015 to date. We offer the service of mixing, packaging, branding and supplying of perfumes and other cosmetics.

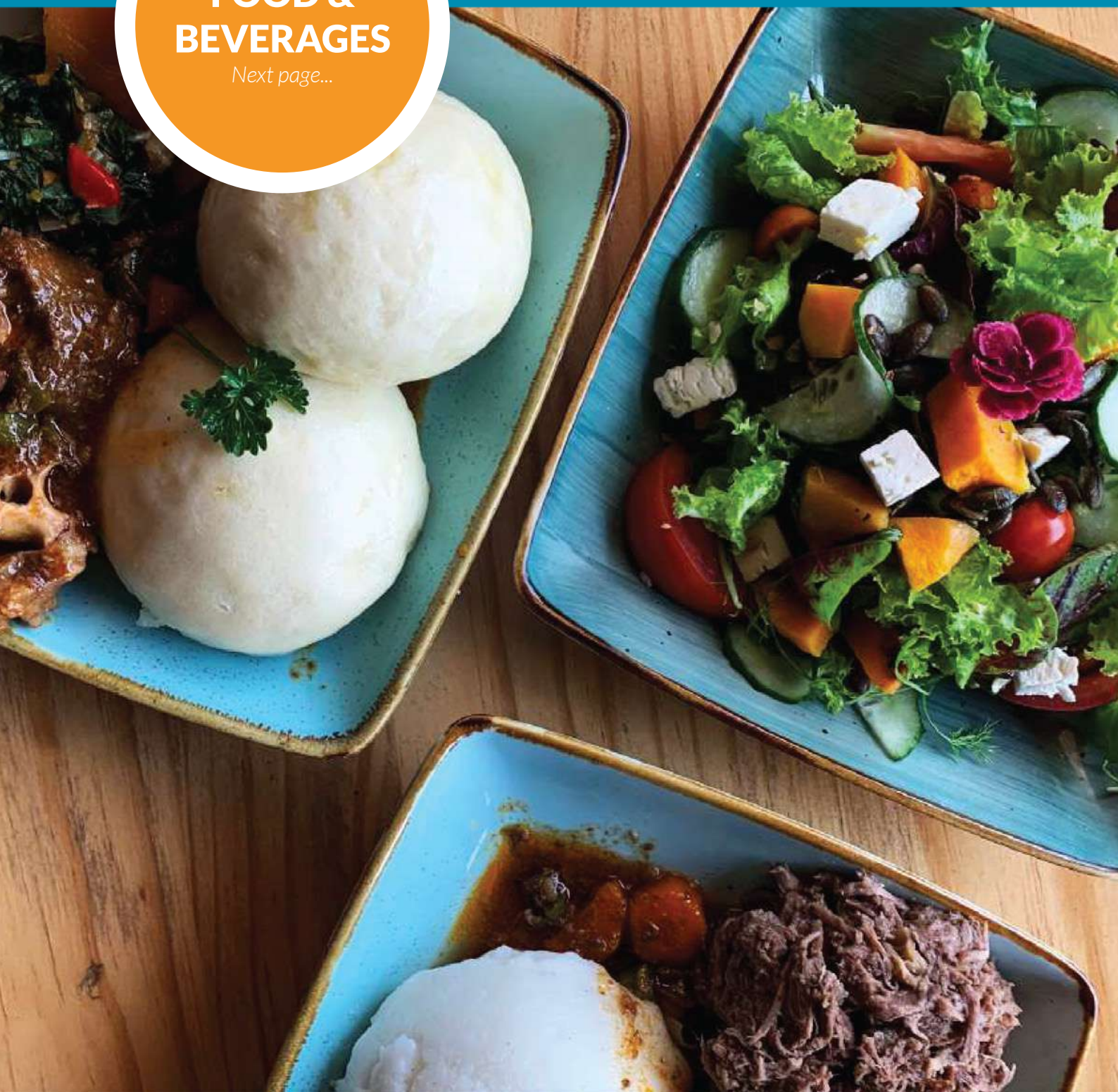
Our Product Range: Perfumes, Roll on and Bath salts

☎ 74340537 ✉ alovvengonga@gmail.com 📍 Alifresh Cosmetics
Physical Address: Nkoyaphiri Industrial Plot 1156,
Postal: P O Box 1941 Mogoditshane



FOOD & BEVERAGES

Next page...





#poweredbyLEA



Maungo Craft is an Award-Winning food processing company that makes Artisanal, Award-Winning, Preserves (Jams), Hot Sauce and Syrups that are Natural and Handcrafted. We upcycle indigenous foods such as Marula, Baobab and Lerotse Melon then we pair them with contemporary flavors giving you the most unique flavor profiles.

Our Product Range;

- **Flavour: Roasted Chilli, Garlic and Marula Hot Sauce**
- **Syrups** (Flavours are: Marula and Rose | Lerotse Melon & Vanilla)
- **Jams** (Flavours are: Smoked Morula, Chilli & Ginger Jam | Morula, Lemon & Vanilla Jam | Beetroot, Onion & Baobab Jam)

3186810 / 76624292 maungocraft@gmail.com
@maungocraftjam www.maungocraft.com



My love story with coffee began while I was working long hours in the kitchen as a professional chef. Like most, I was lured in by its irresistible aroma long before I had my first mug. Before long I was not only enjoying coffee for its robust flavour but I was also using it to fuel my long nights in the kitchen.

Gradually my love for coffee grew into curiosity. Where does it come from? How is it made? What other flavours are out there? These burning questions.

OUR SERVICES:

- Sit in Coffee Shop
- Mobile coffee bar
- catering services
- events venue
- coffee cupping
- sessions
- breakfast & lunch
- Coffee and confectionaries
- take away

+267 71 834 915 Plot 70667, Fairscape Precinct, Fairgrounds, Gaborone
sales@romaticcoffee.com admin@romaticcoffee.com



Sheroo beverages is a locally produced 100% natural beverage made from pounded roots of Motlopi tree (Shepard Tree). The product is produced by a Kolonwaneng based company called Dina Motlopi Beverages Pty Ltd. The beverage is caffeine free and is suitable for all ages. National Food Technology Research Centre (NFTRC) has already done research on Motlopi coffee and positively established its nutritional value and shelf life.

The research has established that 150g of Motlopi coffee contains 11.6 grams of protein, 23.5 grams of crude fibre, 56.8 grams carbohydrates, and 1199.8 grams of energy. The coffee has very low fat content of one gram and, moreover, it is caffeine free

73493214/72981940



Inspired by the founder's expertise and experience. Mos' brand approach is formulated to create a casual dining environment serving fresh made to order at fast casual pricing. A place to work live and Play. A place to see to be seen. A place to, afford to.

Friendly, genuine, bona-fide . At Mo's, we are customer centric, we cook , prepare and service clients with a vision to give a customer an ultimate guest experience.

+267 72707812
+267 72707812
Unit 5A, Fairscape Precinct, Fairgrounds, Gaborone



Divine Morula is a female owned business, that at the start produced Morula Nut oil for its sister company Divine Scents, which manufactures a range of body products like Morula lip balm, body scrub, body lotion and butter and hair cream.

Morula fruit is very tasty, and loved by many and a lot of animals. Through all the oil processing we understood the high nutritional value of the fruit and focussed on utilizing the Morula Pulp. Every season, Divine Morula works with communities, collecting the abundant Morula and Mmilo fruits to stockpile the pulp. This allows us to constantly produce & supply our lovely indigenous flavours all year round.

Our Current Product Range: Morula and Mmilo Juice, Morula Concentrate, Morula Atchar & Morula Jam.

☎ +267 310 5551 / 73 112 990 ✉ info@divinemorula.co.bw
 📍 @refreshingdivinemorula Instagram: @divinemorula



Ao Melhor Taste is a local marinade manufacturing company with one hundred percent Botswana DNA Shareholding.

At Ao Melhor we pride ourselves with our signature taste marinade sauces that come in 3 different flavors being PeriPeri, Barbeque and Lemon & herb to cater for different taste buds. We intend to be the producers of a premium marinade sauce to accompany Botswana's best rated beef Worldwide

Focusing on the producing tasty marinade for the market in Africa and world wide.

☎ +267 72899999 ✉ sales@tatso.co.bw
 @tatso marinade or @tatso marinade.bw



Sunflower Desserts is a confectionery business, founded by Mrs Nametso Senwelo. The business aims to feature as a benchmark in the service of high quality tasty treats. We also provide set menus to order from and also curate customised treats in alignment with client needs.

After years in the industry, here at Sunflower Desserts, we have not only mastered the art of crafting gorgeous cakes, we also love sharing our mastery for all to achieve. We also offer simple to complete and easy to follow courses.

Our Product Range;

- Cakes
- Cupcakes
- Cakesicles
- Macarons
- Cake pops

☎ 3110227 / 71410195 🌐 www.sunflowerdesserts.com



Oodi Sorghum Milling was incorporated on the 5th of February 1997. It is a 100% citizen owned company based in Oodi Village.

Our Product Range;

As our name entails, our main line of business is the manufacturing of sorghum meal. Aided with up-to-date manufacturing equipment, we ensure we deliver the best product available on the local market, surpassing even reputable brands imported into the country. Our fleet is more that adequate to meet our tight supply demands and schedules, ensuring we deliver on-time, every time.

☎ (+267) 3102265 / 3102257 / 71606227 ✉ julia@it.bw
 Plot 3099, Oodi

KNOW US



#poweredbyLEA



Dream Flavours
Heavenly Premium Taste

The company started its operations in 2009. The company is situated at Bokaa Ward, Molepolole. We are a manufacturer of Dream Flavours products. "Dream Flavours" products are surely becoming one of the most well-known brand names among the hundreds of people in Botswana.

The brand "Dream Flavours" is definitely establishing itself in the category of food and beverage industry and can boost a product range from Yoghurts, Juices, and Ice Pops and Madila products. Today, our consumers not only value "Dream Flavours" for its authentic refreshing juice drinks products, but also for its mouthwatering quality yoghurt products with high visual appeal and exciting texture.

+267 592 0958 | whiteangelsbw@yahoo.com
 Dreamflavours.whiteangels | Plot 6959 Bokaa Ward, Molepolole



SWEET SENSATIONS

Sweet Sensation is an award winning, chocolate manufacturing company. Its aim is to provide premium chocolate with a taste of indigenous fruits found here in Botswana, such as morula, motoroko (Prickly pear) to our clients at an affordable price.

We offer chocolates with no preservatives to provide a high-end quality with divine flavour and taste. Our Chocolates are hand-crafted and hand wrapped with care. We also offer personalized chocolates to corporate, private functions, hotels and lodges. The product is for all events and occasions that call for a customised and personal touch to their event.

+267 75006038 | sweetsensationbw@gmail.com
 Sweet Sensationsbw | Instagram: bwsweetsensations



ARROZ PREMIUM
Aroma • Flavor • Quality

Arroz Premium is a 100% citizen owned company supplying long grain parboiled rice. It is known for its premium quality, great aroma and oozes with flavor & nutrition above all cooks in less time. It is known for its premium quality, great aroma and oozing with flavor and nutrition above all cooks in less time.

Our operation is closely monitored from transport, storage, packaging and delivering, ensuring the client's satisfaction. Our warehouse is spacious, operated by well-trained enthusiastic staff. It is well supervised with a strict quality control and inspection at every stage ensuring its products of a high standard. Arroz Premium serves all major divisions of the industry may it be foodservice, retail, government institutions and private label and vision to supply nationwide and cross borders.

+267 261 0030 | 73727400 | admin@arrozpremium.co.bw



SMETCHAR
Foods

Smetchar Foods is a food manufacturing Company which also has an ambitious vision and focus on Training and Consultancy in Food Safety Management System (FSMS) and QMS. The Company was born out of an academic who is a Food Scientist by Profession and a Foodie in her own right.

Our Product Range:

- Mild atchar
- Hot (Original) atchar
- Extra Hot atchar

+267) 72 456 607 | smetcharfoodsbw@gmail.com



Water practically is a holding substance of life, looking it in howsoever possible way and from any perspective of life, it is but a source of life and it is that much divinely'. This is how we become relevant as an entity; through Kapital Fonts (Pty) Ltd. Hydrate is a brand established in Botswana whose core business is the supply of water purification, its equipment for domestic and industrial use.

- Customized / personalized water branding and supply for social and corporate occasions.
- Purified water Refill points
- Advisory on harvesting and general water solutions, supply of water reserve equipment
- Sales, installation and maintenance of auxiliary filtration and purification systems.

+267 72229812 info@hydratestillwater.com
Hydrate Still Water



For Life is a 100% Batswana owned business that specializes in manufacturing of purified water products. The business is under ownership of Mr Leonard Dikhudu, and Mrs Motsatsi Dikhudu. The business was registered with LEA in 2021. The business started its operation in 2019 in Ramotswa.

Through the assistance of LEA For Life was able to adopt the Financial Viability Tool to start implementing record keeping systems in place. The company has secured a shelf to market its products at SQUIRE MART. The company is looking forward to acquire market with other Retail Stores

+267 72110046/71305225
motsatsi@yahoo.com



Stub Investments is a 100% Batswana owned business that specializes in the manufacturing of biltong products. The business is under ownership of Mr Stephen Keoreng, Ms Lydia Leboane and Mr Tswelelang Leboane. The business was registered with LEA in 2021. The business started its operation in 2020 in Ramotswa. Upon joining LEA the business had challenges of operating without license due limited operating space.

Through the assistance of LEA Stub Investments was able to adopt the Financial Viability Tool to start implementing record keeping systems in place. LEA also availed its factory shells to Stub investments to be able to secure operating space and apply for a manufacturing license. The company has secured ample market with LIQUA RAMA country wide. The company is looking forward to acquire market with Air Botswana and others.

71644545/71669427 stubinvestments@gmail.com



Len Bakeries was started in 2013 by Goitseone Lenyatso. One day in 2013 a friend baked her family a very nice cake and from there, she developed a huge interest in baking cakes, she then started looking in the internet for recipes, cake tools, and learnt how to bake and how to decorate cakes, that is how Len bakeries was born. We started baking in Lobatse, and moved to Gaborone in 2016. We specialise in baking cakes, cupcakes and recently started making and selling buttercream locally. Our products are cakes, cupcakes and buttercream.

The cakes are red velvet, black forest, chocolate, lemon cake, carrot cake, vanilla cake, caramel cake and fruit cake. Buttercreams are in five flavours, caramel, lemon, chocolate and vanilla. We look forward to a day when we shall be producing a lerotse flavoured buttercream cakes. We also provide training and mentorship in baking.

71907345/74408795/72479887 goitsie@yahoo.com
LEN BAKERIES BW- LEA KUTLA INCUBATOR UNIT 2



Foodforage (PTY) LTD was registered in Botswana in 2017, by three young ladies of which two are food scientists and technologists and one Economist. The company is 100% citizen owned.

Our Product Range;

- Smooth Peanut Butter
- Crunchy Peanut Butter
- Smooth Peanut Butter (no sugar)
- Crunchy Peanut Butter (no sugar)
- Smooth Peanut Butter (no sugar, no salt)
- Crunchy Peanut Butter (no sugar, no salt)

+ (267) 75541205 | infor@fooforage.co.bw | reftit@gmail.com
 Food Forage



Temo Boswa Milling is a business owned by a young Motswana Lady Mpho Thato Orapeleng- Gaobolae, which was funded by the Ministry of Youth in 2018.

We manufacture and package:

- Wheat and sorghum meal soft porridge for Kids.
 - Mosuthwane
 - Ntlatlawane
 - Bopi jwa Korong
 - Bopi jwa mabele
- Package Different varieties of beans.

Temo Boswa supplies to all Choppies Stores, Square Mart, Trans Africa, Dairy Shoppee and sells to individuals. Temo Boswa is in the processes of supplying to Pick n Pay, PayLess, Eureka and Fours. We aim at supplying our best quality products through out all seasons at the right time to consumers in Botswana. We are one of the trusted suppliers with the best consumer services and love to put a smile on both adults and babies. #Temo Boswa #Harvest Season.

+ (267) 73231762 / 74671461 | temoboswa@gmail.com
 Temo Boswa Milling Company



Our mission is to build sustainable communities, advance social entrepreneurship, and enhance partnerships through research and training.

Established in 2015, Kalahari Honey is a honey aggregator that creates direct employment for more than 1500 families across Botswana, Namibia and Zambia through Beekeeping. The company uses Beekeeping to create balance between human, wildlife and the environment they live in, such as using bees to pollinate, using beehives as living fences to keep wildlife away from the farms. The company trains and supplies farmers with beehives. The company is legally registered in Botswana.

+ (267) 73811629 | onalennakolobe@gmail.com
 Kalahari Honey



We do Food Processing mainly focusing in extending shelf life of traditional products. We started with canned beef tripe/Mogodu in Two flavours chilli n plain.

PRODUCT

- SETSO BEEF TRIPE/MOGODU IN GRAVY

PRODUCT DESCRIPTION

Setso Beef Tripe/Mogodu is a diced particulate product suspended in Plain or Chilli gravy flavors packaged in hermetically sealed containers and thermally processed for a predetermined time, temperature and pressure in order to make the product wholesomely safe for human consumption.

+267 72104305 | webster@setsofoods.co.bw
 Plot No 530 Boswelatlou, Lobatse Botswana

PACKAGING



Gifts by B is a 100% citizen and youth owned company established in 2018 by a Motswana woman. We specialize in the design and packaging of the finest artisan gift hampers for every accomplishment in life. With flawless execution and sound logistics being our primary area of focus, we value an "authentic gifting experience".

Wooden blinds

We provide:

- Corporate Gifting i.e. stakeholder appreciation, events, special occasions, company milestones, etc.
- Individual gifting i.e. anniversaries, milestones, celebrations etc.
- Gift deliveries
- Floral Designs; Bouques, center pieces

+267 75650678 baeng@giftsbyb.co.bw Gifts by B



Green Loop Environmental Consultants was established in July 2019, in Gaborone, Botswana. The establishment of the consultancy came about during the observation of the nations' minimal knowledge of sustainability and environmental-practices. When you look around the capital city of Botswana, Gaborone, and near-by surroundings, you notice a tremendous amount of pollution.

OUR SERVICES

- Environmental Impact Assessment EIA, EMP, SEA, Monitoring & Rehabilitation
- Green Rating o (environmental-economic cost savings)
- Renewable energy solutions (Waste To Energy-WTE)
- Environmental msocial and Corporate Governance (ESG) practice challenges of climate change
- Biodegradable packaging of food and waste
- Recycle Waste Sorting Bins

73903939/ 75863290/74983896 Plot 738, Unit 6, Phakalane
info@greenloop.co.bw Green Loop BW Instagram: greenloop_bw

AGRI BUSINESS & COMMUNITY DEVELOPMENT



Village 100 Pty (Ltd) is a horticultural enterprises producing high value crops in a controlled environment. Vegetable production plays a pivotal role in the human life on a daily basis as they do form a part of our staple diet. Fully committed to ensuring that our countries food security is met: It is imparative that we don't compromise on the quality and freshness of our products.

We currently offer a gamut of fresh vegetables which includes Tomatoes, Sweet Peppers and cucumbers.

📞 726084488

✉ kenalemangta@gmail.com | Pilane



GREEN GEM NURSERY



Green Gem (Pty) Ltd is a Plant Growing nursery, Garden maintenance, landscaping and Horticultural solutions and recently Cleaning Services firm which is 100% citizen owned and has 2 farms in Phakalane and Glenvally the headquarters are behind the Phakalane Golf Estate along Ruretse Road in Gaborone. The company employs over 40 locals in Gaborone, Selibe Phikwe and Maunatlala with the capacity to grow and the majority of employees being females (75%). We also believe any individual with disability that meets the essential qualification of job position is an eligible prospective employee.

📞 (+267) 72303213 / 72119910

✉ raymond@green-gem.co.bw

Plot 54190, Phakalane

KNOW US



#poweredbyLEA



Surface investments (PTY) LTD is a Botswana citizen owned company which was established in 2017. The company was conceived with the aim of enhancing food security and providing vegetables to the nation that are affordable, accessible and traceable.

The project is a horticultural crop growing project undertaken on a 10Ha farm situated at Tantapane lands near Maboane. Surface investments has been operating for the past two years and has been doing relatively well despite challenges in the open space field production. However expansions have been made to cater for winter productions and thus having the ability to supply vegetables all year round.

☎ 71771643 / 73100067 ✉ surfaceinvestments@gmail.com

📘 Surface Investments Farm



Anbo Farms (Pty) Ltd is a wholly citizen owned farming concern with interests in various aspects of agriculture, namely feed milling (poultry and livestock), crop production and cattle ranching. The company's picture of success is anchored on the following:

Livestock Feeds Product Range, Process Technology & Product Quality

Product Range range: Livestock Feeds mainly the Poultry and Beef

☎ Landline & Fax: 2470851, | Cell: 74147187 / 77712760

✉ info@anbofeeds.co.bw | Plot 898 Tati-Siding Industrial, Private Bag T25, Tatitown

COMMUNITY DEVELOPMENT PROJECTS



Zutshwa Salt is mined, processed and packaged in a small village called Zutshwa in the Kgalagadi district. It is run by the community of Zutshwa through Qhaa Qhing Conservation Trust.

Their main customers include BAMB, BMC, Tholo Holdings and farmers in the region.

☎ +(267) 71530121 / 71212614 ✉ modmodise@gmail.com
Maapodi Ward, Plot 310, Zutshwa



The BORAVAST Community Resources Management Trust(Trust) Trust is mandated to manage the natural resources within the Bokspits, Rapplespan, Valhoek and Struizendam areas under the auspices of the Community

We strive to ensure economic benefit derived from natural resources exploitation for the equitable beneficiation by the BORAVAST communities. Our aim is to promote profitable business ventures that will directly plough back to the community.

Our products range:

We produce and package charcoal as well as fodder out of the invasive Prosopis Juliflora tree species (Sexanana Tree)

☎ +(267) 73 673 084 ✉ boravasttrust@gmail.com
P O Box 10 Bokspits, Botswana ,

HEALTH CARE & PHARMACEUTICALS





#poweredbyLEA



Urban Lifestyle Physiotherapy is a Private Limited Company, which is registered with the Botswana Health Professions Council.

It was established in May 2013, currently provides a wide range of physiotherapy services with more focus musculoskeletal conditions to patients from Gaborone and Surrounding areas

+267 71406166
nonopanene@yahoo.com



Sylike medical is a local medical technology company engaged in the manufacture and sale of a range of medical supplies, devices, laboratory equipment and diagnostic products.

The Company started production of viral collection and transport medium tubes (VTM). Which are currently on demand due to the Corona pandemic. Our next production phase of Blood collection tubes (BCT) consists of all BCT range.

OUR PRODUCTS & SERVICES

Our current major manufacturing lines are:

- Viral collection and transport medium tubes (VTM)
- Blood Collection Tubes (BCT)
- and other ACCESSORIES

(+267) 3960325 support@sylikemedical.co.bw
sylikemedicals



Kalafhi Medical Center is a 100% Botswana-based company, with the purpose to provide quality and accessible healthcare services for everyone. You can count on us for all your medical care needs because if there are 3 things we stand by its:

- Good Turnaround Time
- Convenience
- Good Customer Service

Since our establishment in 2018, our aim is to be your reliable and trustworthy healthcare provider of choice and give you the necessary health care, support and quality you deserve.

Headquarters; 3115929 | 72 133 82 Main Mall 3164269
397 5237 | 74266506 | 390 6944 | 74 532 311



FASHION &
TEXTILES



KNOW US



#poweredbyLEA



BOTOCY CREATIONS (PTY) LTD was registered in October 2014 and started operating formally in February 2017. We are a 100% female and citizen owned company that strives to improve the lives of Batswana by creating sustainable jobs in the labour intensive textile and apparel sector. We aspire to create no less than 50 jobs within our company by the year 2024.

The **BOTOCY BRAND** was established in 2010 and has continued to grow and develop consistently over the last 8 years.

+267 72474301 / 76668949 botocycrations@gmail.com
 Botocy **Instagram:** Botocy Creations



Mighty's Fashion (PTY) Ltd is your number 1 stop shop.

Providing;

- School uniforms
- Corporate wear
- African attire
- Wedding gowns
- Protective clothing
- Leather works.

Trust us to make you look your best

We also do embroidery and manufacture jerseys, socks, scarfs and binies

71669554 chabaanastacia@gmail.com Plot Old Mall, Serowe



Skin and Things Consultancy is a small business run and solely owned by a Motswana woman with a passion to create beautiful and superb African arts and crafts. The business though in its infancy was established in 2010.

- Flower pots
- Belts
- Leather shoes
- Bags
- Portraits
- Jackets
- Hats
- Traditional mate/ Diphate e.t.c
- Gift bags

71838905 / 73551049 / 75068585
 P P BPX 23 Makopong, Kgalagadi South



Conquerors Design (Pty) Ltd is a 100% Batswana owned company based in Ramotswa offering a range of tailoring and soft furnishing services. We take great pride in the high quality of our work and offer great value for money.

Whether you require an alteration from a simple hem to a complete refit of a new suit; a little nip and tuck to an old favorite outfit to an overhaul of a new prom dress to ensure the perfect shape; a change to the length of your curtains to bespoke cushion or leather sofa covers, we've got it covered

Sports Wear | Protective Clothing | Uniforms | Upholstery | Knitting | Head Wear | Corporate Wear | Jackets | Branding | Leather Work | Bags | Embroidery

conqdesign@gmail.com Conquerors Design



#poweredbyLEA



Line Feed (Pty) LTD is a locally registered company with fully operational branches in Francistown, Palapye, Selibe Phikwe, Sowa Town and Letlhakane. We are 100% citizen owned. On the 4th of October 2002, we officially registered Line Feed under the laws of Botswana. Our principal business is distribution (BBF Safety Footwear, Protective Clothing, SBS Tanks, Crane Handling and Storage Solutions, Beverages and more).

We also manufacture Tarpaulins and safety garments through our production wing, Justine Manufacturers. We direct all operations from our office and workshop in Light Industrial, Makgadikgadi Street, Plot 4898 Francistown. Line Feed strictly runs on sound business principles with a High Customer focus and ongoing research and development.

☎ 2404774 ✉ reubens@linefeed.co.bw / boatlhotswet@linefeed.co.bw | Plot 4898, Unit 4, 12 & 13, Lite Industrial, Francistown Line Feed



Nitaz Collection PTY Ltd is a 100% citizen owned company that responded to the Botswana Governments call to economically grow and diversify the Selebi Phikwe region, by providing complete solutions in the area of textile industry to its customers. Nitaz Collections PTY Ltd textiles specializes in and on trend styles, quality garment assembly and superior customer service.

At Nitaz Collections we offer a full-package program for all your work wear requirements, from initial design concept through to sampling, manufacture and distribution. All locally and proudly produced at our Selibe Phikwe based factory.

☎ 71646400 / 76163564 ✉ info@nitazcollection.co.bw | Plot 8900/A, Industrial Area, Selibe Phikwe 📱 Nitaz Collections



We are the manufacturers and suppliers of the following:

- **Workwear, Corporate Wear, Sports, Promotionals, Head Protection, Face Protection, Ear Protection, Eye Protection, Respiratory Mask, Safety Harnesses, Hi Viz Wear, Rain Wear, Aprons, Disposable Wear, Cleaning Products, Catering, Promotional, Safety Foot Wear and More**

☎ +267 73340682 ✉ privonsportswear@yahoo.com



CLEANING & DETERGENT



Tlou Detergents is a Botswana registered manufacturing company. It is a 100% citizen owned small enterprise that produces washing detergents. It currently employs five (5) people.

About Us

Tlou Detergents, as its name implies, produces washing liquid detergents.

- ☎ 3926 988/71823690 ✉ infor@tloudetergents.com
- 📍 Plot 11707, Ntshinoge Ward, Mochudi 📘 Tlou Detergents BW
- 🌐 www.tloundetergents.com



Ostrendo Investments (Pty) Ltd trading as Ostrendo Brushware is a wholly citizen owned company established in 2021 and started operations in 2017.

By incorporating a group of highly skilled employees with years of experience for the sole purpose of forming, cost effective domestic and industrial products which include custom made brooms, feather dusters, mops, ironing boards, door stoppers, peg holders, fadug bags, etc.

- ☎ 71201565 / 77684943 ✉ ostrendoinv@gmail.com
- 📍 Plot 4, Unit, Pilan Multipurpose Incubator



#poweredbyLEA



Sparkle-It Detergent Manufacture Botswana is a company based in Serowe.

We manufacture a variety of cleaning detergents e.g **multipurpose cleaner, Heavy duty degreaser, ammonia cream cleaner, blood stain remover, window cleaner, jik, floor stripper, hand Soap, dishwashing liquid soap, sanitizer, hand gist, drain cleaner, oven cleaner, pine gel and others**

☎ 74897881 ✉ golebagolebak@gmail.com
 📍 lebbylebbylebby (goleba lebbylebby Keabetswe)



Neat Solutions PTY LTD is wholly citizen-owned company which specializes in manufacturing of cleaning chemicals and supplies of quality hygiene and cleaning materials.

General Cleaning Chemicals

- Bleach
- Dishwashing Soap
- Anti-Bacterial Hand Soap
- Oven and Grill Cleaner
- Pine Gel
- Handy Clean Cream
- Floor Stripper
- MultiPurpose Cleaner
- Hand Sanitizer

☎ + 267 3903596 / 73457619
 ✉ sales@neatsolutions.co.bw
 📍 Neat Solutions Company



Volkschem (PTY) Ltd is a 100% citizen-owned chemicals manufacturing company led by trained and experienced chemical experts. Our lead manager has worked for three (3) years as a Factory Chemist and six (6) years as a Plant Manager for the leading paint manufacturing company, Plascon, being responsible for paint design, formulation, manufacturing, packaging and distribution both locally and internationally.

Cleaning Chemicals, Industrial Chemicals, Industrial & Domestic Consumables, Medical Consumables

☎ Moditshane: 3919756 / 72307505
 Maun: 6840404 / 72842668
 ✉ samuelr@volkschem.co.bw



Slae Manufactures Pty Ltd is a 100% citizen owned toilet paper manufacturing company which specializes in production of toilet rolls and core tubes Our company provides 2ply soft toilet rolls with quality that dissolves in water it affordable prices for resellers and for household users.

Services Offered

- 2PLY VIRGIN TOILET PAPER 350 SHEETS
- CORE TUBES

☎ + 26771604491 / 71405978 ✉ info@slae.co.bw
 📍 Slae Tissue

**BUILDING &
HARDWARE**



KNOW US



#poweredbyLEA



Kalahari Shade Net (KSN) objective is to build a reputation for reliance, good quality and durability in our key service sectors, being:

Agro-business sector, Leisure sector, Industrial and Commercial sectors including individuals we serve. Our products protect people and external dwelling areas from harmful UV rays, sun, and other weather elements. KSN intends to improve agro business output and enhance architectural dwellings, appearance and feel.

- 📞 2610297 / 77612180
- 📍 Kalahari Shade Net
- ✉️ jjithobogeng@kalaharishadenet.co.bw



The company produces hard-wearing and better looking architectural paints, Industrial paints and coatings, road marking paints, emulsion paints, wood vanish, lacquer thinner, turpentine and bonding liquid.

Other Business Area:

- Manufacturing of paints and coatings
- Expert advice on paint application and problem solving
- Consultation on paint products

- ✉️ +267 71499689 / 72513620
- ✉️ touchmeltinvestment@gmail.com
- 📍 Plot 8895 Pope John Paul Street, S/Phikwe, Botswana



Amo Nozzie Dee Investment (Pty) Ltd is a wholly citizen owned company founded by Mr Boikaego Sebudubodu who is currently the Managing Director.

Our Services

- Vertical blinds
- Venetian blinds
- Wooden blinds
- Roller blinds
- Commercial window tint
- Residential window tint
- Automobile window tint

- 📞 5729009/77031903
- ✉️ amonozzieblinds12@gmail.com
- 📍 Amonozzie dee blinds | Plot 391, Borejane Street, Pilane



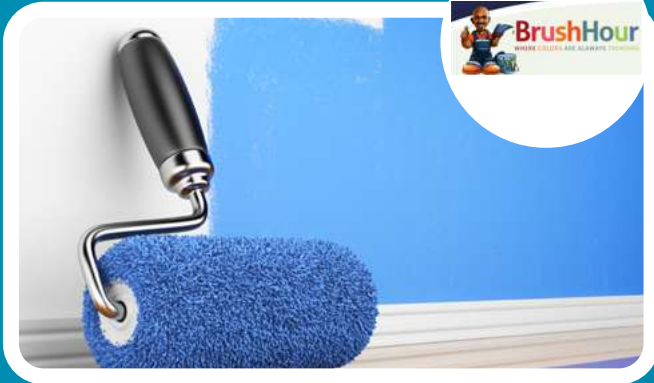
We are a citizen-owned company operating in the Tile industry. We are fully conversant with the market and the nitty-griffies of the industry. We manufacture high quality and affordable tile adhesives for mainstream tiling, such as Ceramic, porcelain and Stone tile adhesives, Bonding liquids and accessories.

- 📞 5300062 / 71256074 / 74856676
- ✉️ malebogosedirwa@tilemate.co.bw
- 📍 Tile Mate

KNOW US



#poweredbyLEA



We are a locally-owned business specialising in a wide spectrum of painting services in Botswana. We aim to provide top-quality interior and exterior paint at reasonable prices. We obtain all our products directly from reputable manufacturers to ensure that our customers enjoy quality products and competitive prices. With a vast range of products to choose from, quotations can be tailored to suit each client.

OUR SERVICES

- Tailored painting
- Colour paint advisory
- Site visits
- Quality control
- Colour coding

Phone: (+267) 73400018 / 73400019

Email: info@brushhour.com

Brushhour



LUBRICANTS



Strub
Lubricants
Botswana

Global Lubricants (PTY) was an independent ISO 9001 certified blender of lubricants that has been manufacturing quality automotive and industrial lubricants in Francistown, Botswana since 2009. Responding to international trends, OEM requirements and the desire to be part of an international network Global Lubricants teamed up with Strub-SA and have together set up a manufacturing hub in the heart of the SADC region, Botswana. The STRUB brand was founded in Switzerland during 1910 and was established in South Africa in 1983 as Strub-SA.

WIDE RANGE OF PRODUCTS

- Strub has the full range of lubricants and greases, from automotive to industrial (hydraulics, transmission, compressor and diesel combustion) applications.

Phone: (+267) 2412481

Email: saiyazsarder@hotmail.com



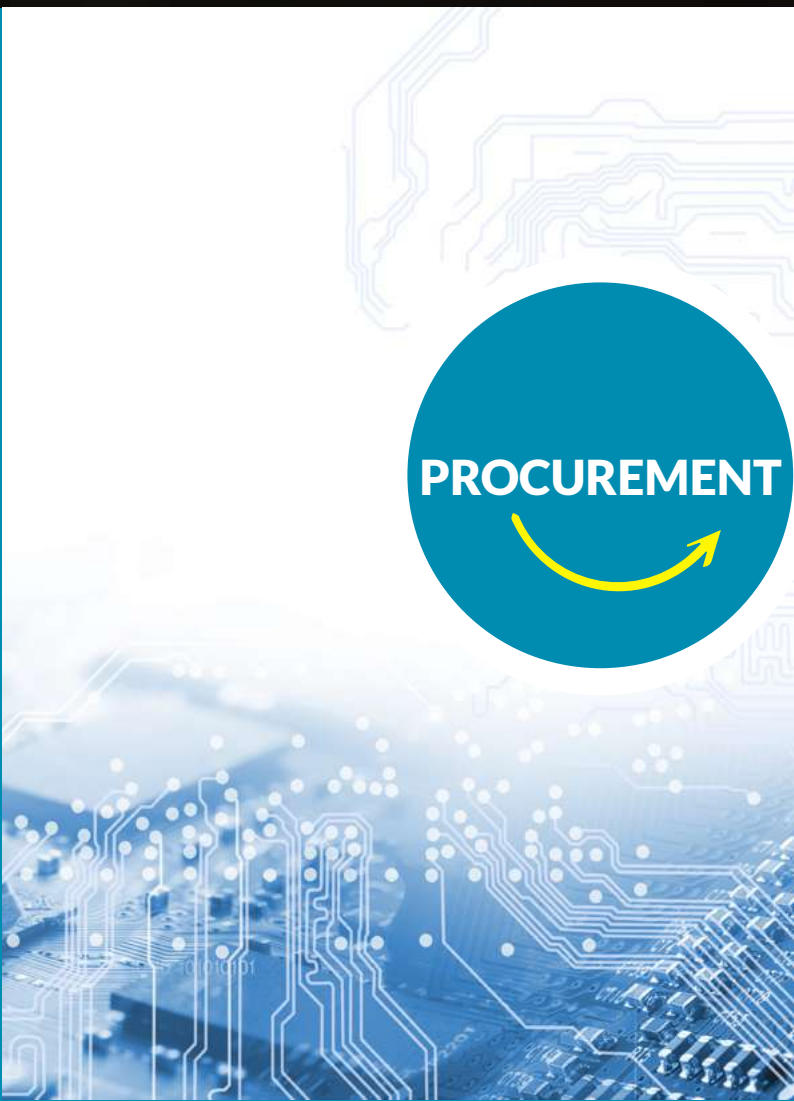
TOURISM



A Campsite with a Swimming Pool, Bar and Restaurant, Waterpark Tented Chalets, Garden, Dam, garden Ideal for Picnics, Weddings, Camping, Waterpark for Kids and Parties & Conferencing.

WiFi suitable to do office work in the bundus.

- 73741705
- enkosicampsite@gmail.com
- Enkosi Campsites and Gardens



PROCUREMENT



iFirsh was founded to create access to market, digitize businesses and refine the purchasing process. The eProcurement platform is in response to a need for a convenient, efficient way to source goods and services without physically going from supplier to supplier. We curb time lost in procuring goods and services and minimize inflated prices by suppliers. We reduce resource wastage; from fuel costs to man-hours lost whenever employees go out sourcing for quotations. It offers an expanded market reach for both the supplier and buyer.

- Why iFirsh.
- Get competitive prices from multiple suppliers.
 - Transparency in procurement.
 - Real-time responses to RFQs.
 - Exposure to local goods and services through the digital catalogue

- +26778050 430
- www.ifirsh.com
- support@ifirsh.com



Scan the QR Code to download the
2022 BESTSELLERS CATALOGUE.



www.lea.co.bw
TOLL FREE: 0800 155 155